



**Constables**  
SALES & LETTINGS

The Lydiate,

Willaston, Neston

£2,400 Per Month

A long, elegant hallway with dark wood paneling, a patterned carpet, and a chandelier. The hallway is well-lit with wall sconces and a large chandelier hanging from the ceiling. The walls are covered in dark wood paneling, and the floor is covered in a patterned carpet. A fire extinguisher is visible on the left wall, and a small table with a lamp is in the distance.

Constables are delighted to offer to let this stunning two double bedroom ground floor apartment located in an exclusive gated development in Willaston, Cheshire.

This apartment is created from the conversion of a mid 19th Century Grade II Listed country house, stables and outbuildings all set in 12 acres of landscaped grounds and gardens including hard tennis court, fruit tree maze, parkland and a small lake. This spacious two bedroom apartment offers some of the principal rooms from the original house including a quite stunning bay fronted lounge.

The accommodation comprises; entrance hallway, formal lounge with wood block flooring and fireplace, orangery/dining room, kitchen with and integrated oven, hob. The apartment has two double bedrooms and two bathrooms, one of which is en-suite. Externally there are two allocated parking spaces and visitor parking.

# Constables

SALES & LETTINGS

- Two Bedroom Ground Floor Apartment
- Set in 12 Acres
- Available December
- Furnished
- Grade II Listed Country House
- Council Tax Band: F
- Gated Community
- Many Character Features
- Two Allocated Parking Spaces

## Entrance

## Main Hall

## Lounge

16'03 x 27'10 (4.95m x 8.48m)

## Kitchen

9'01 x 13'10 (2.77m x 4.22m)

## Dining Room / Orangery

7'01 x 15'00 (2.16m x 4.57m)

## Master Bedroom

15'02 x 17'09 (4.62m x 5.41m)

## Ensuite

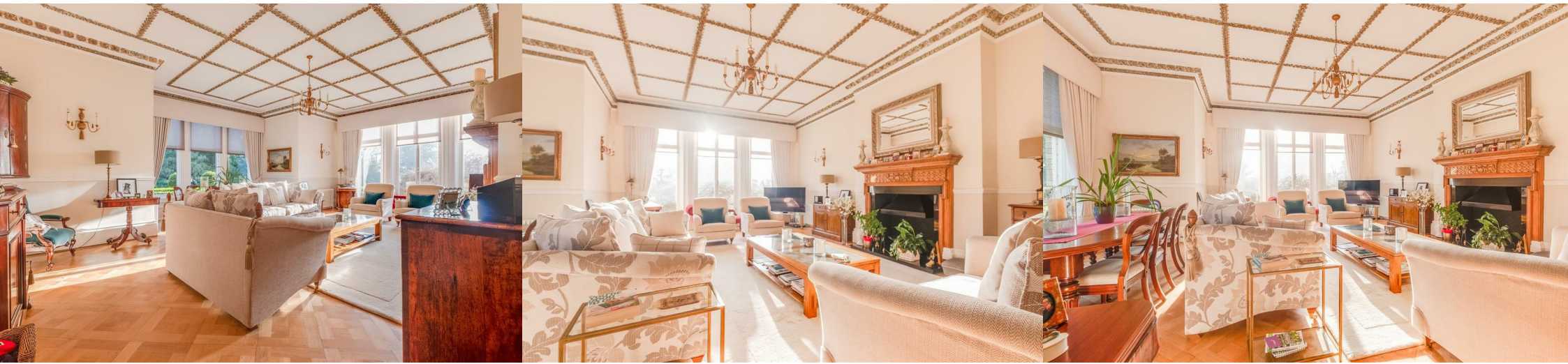
6'04 x 11'06 (1.93m x 3.51m)

## Second Bedroom

13'04 x 17'07 (4.06m x 5.36m)

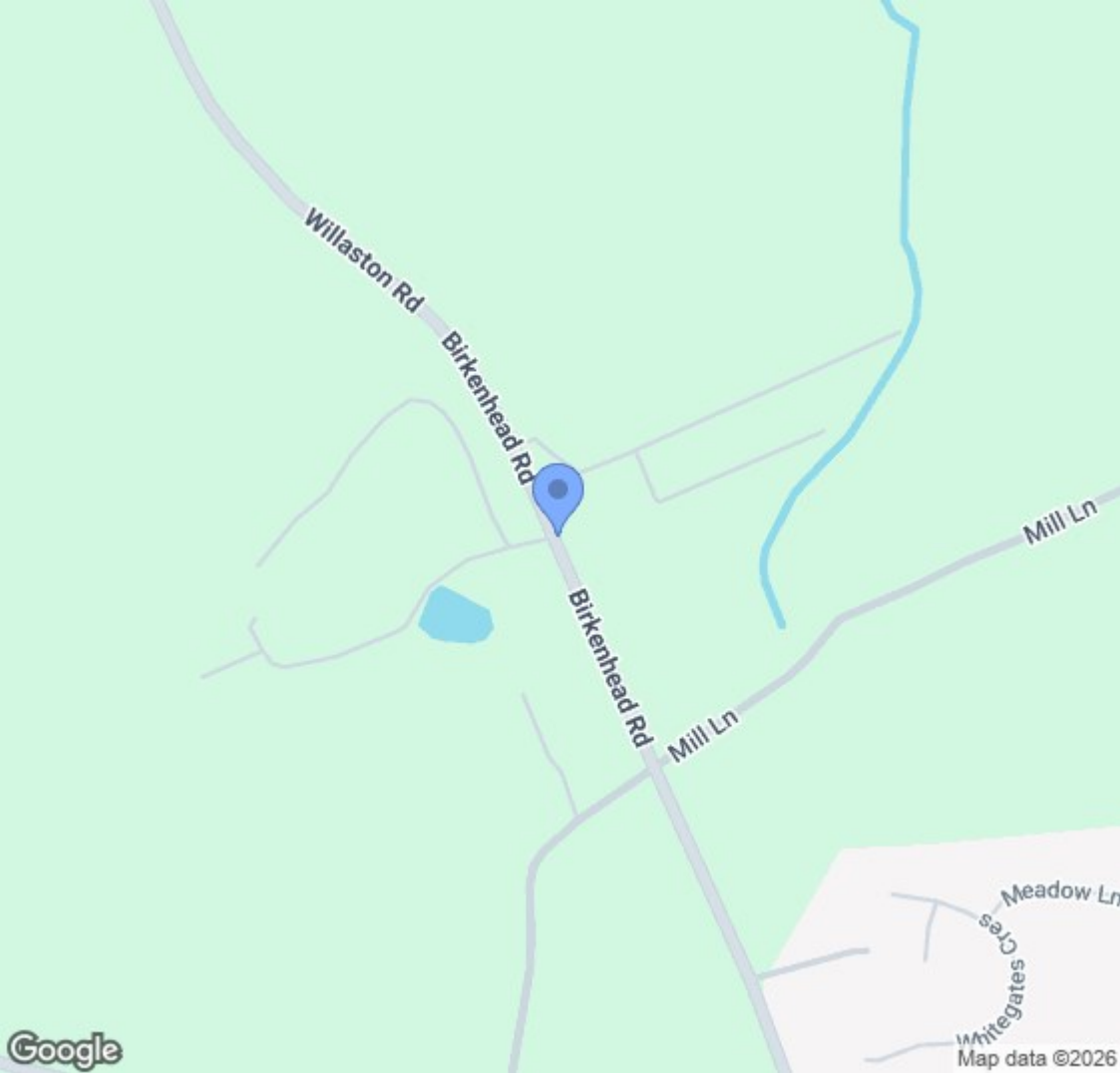
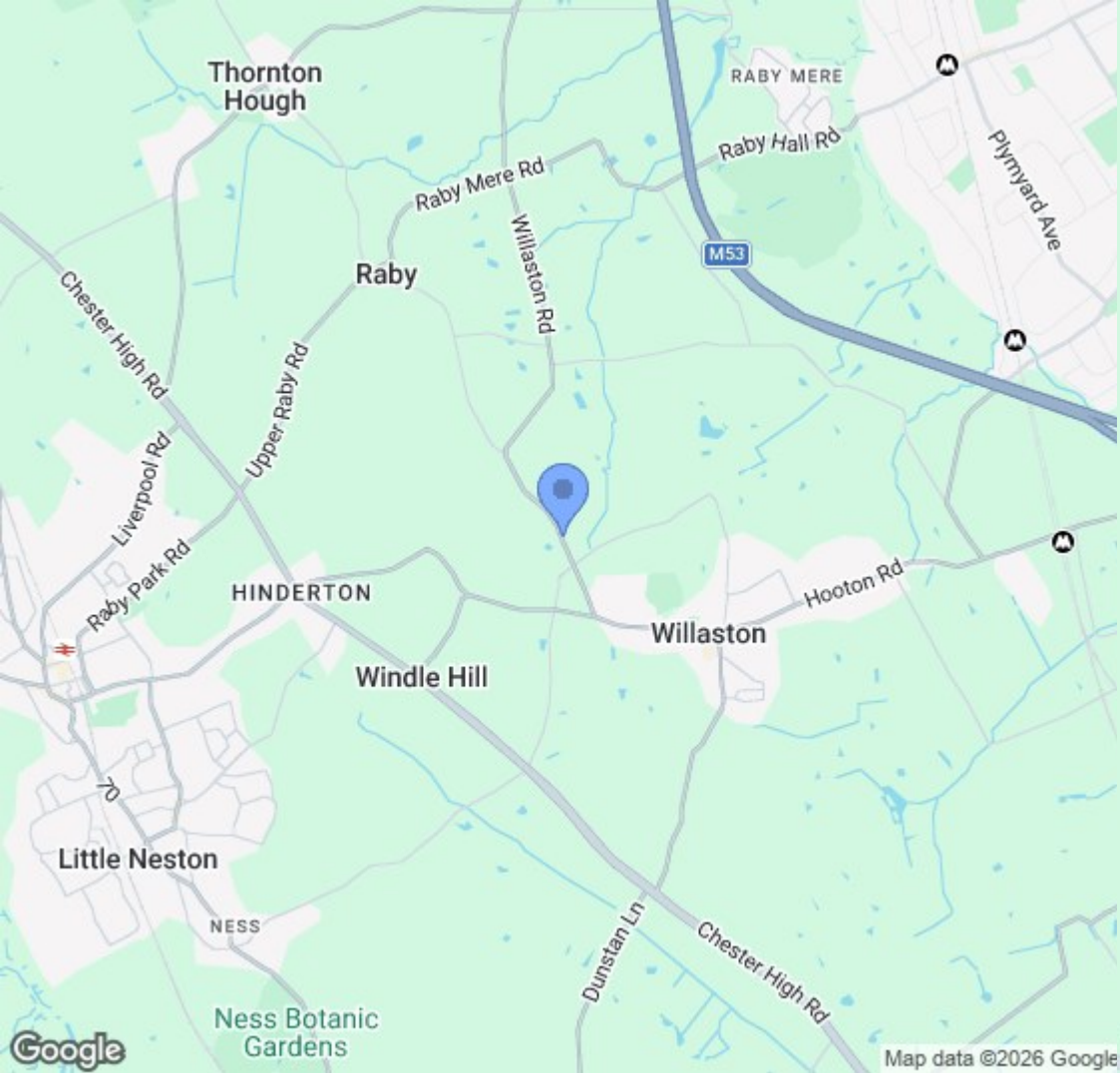
## Ensuite

5'07 x 11'05 (1.70m x 3.48m)





# EPC & Floor Plan



Location Map

# Constables

S A L E S   &   L E T T I N G S

21 High Street, Neston

South Wirral, Neston, Cheshire

[www.constablesestateagents.co.uk](http://www.constablesestateagents.co.uk)

[info@constablesestateagents.co.uk](mailto:info@constablesestateagents.co.uk)

0151 353 1333